

- Alfred Adler (7 February 1870 - 28 May 1937)

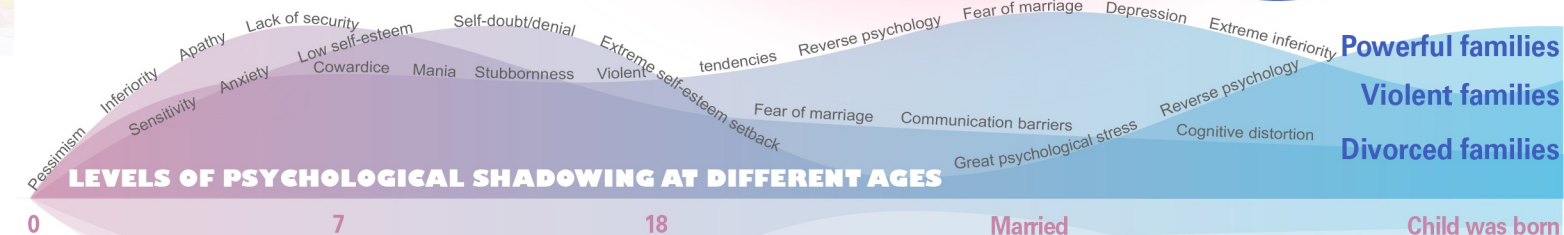
I hope to use art as a way of healing for those who have experienced childhood family problems that have created shadows in their minds. The work takes the form of an hourglass, using acrylic to simulate ice, comparing the psychological shadows of childhood families to memories sealed in ice, which will gradually melt away as time passes, allowing time to heal the damage.

INSTALLATION DESIGN EXPERIMENTAL IMAGE

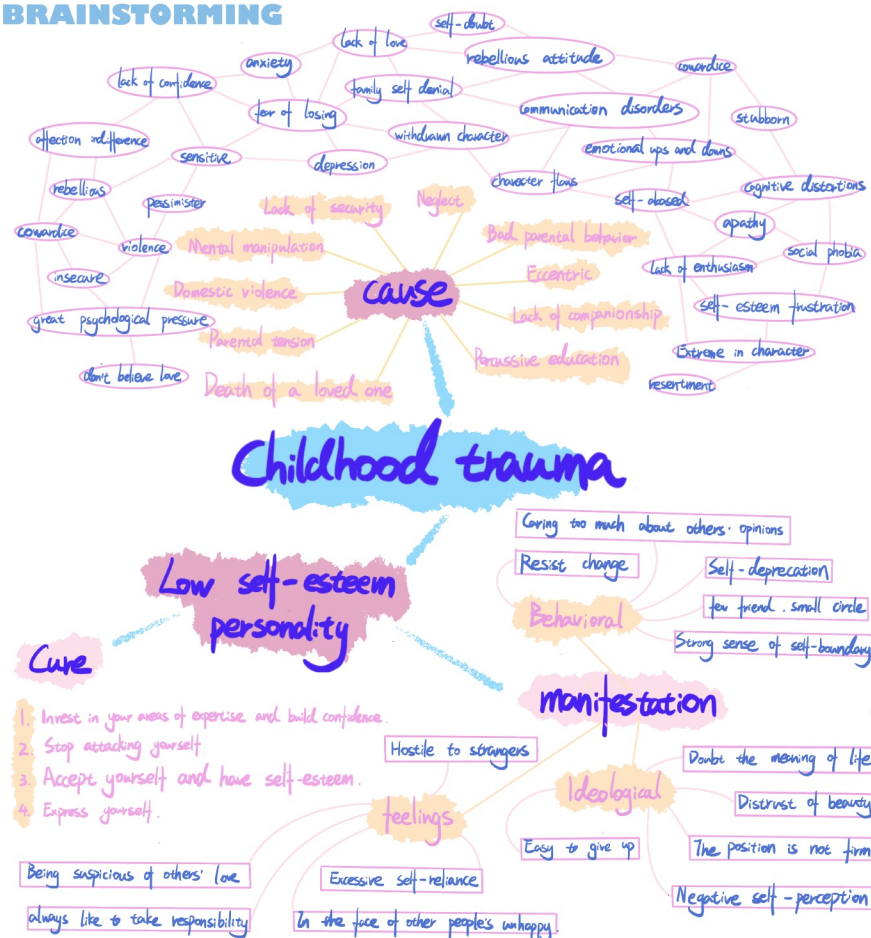
## GROWING UP WITH ENVIRONMENTAL INFLUENCES

## “

A collage of images related to the horror genre. It includes a close-up of a bloody eye, a blue hand holding a knife, a scorpion, and a person's mouth with stitches. The background is a solid blue circle.

[illegible]

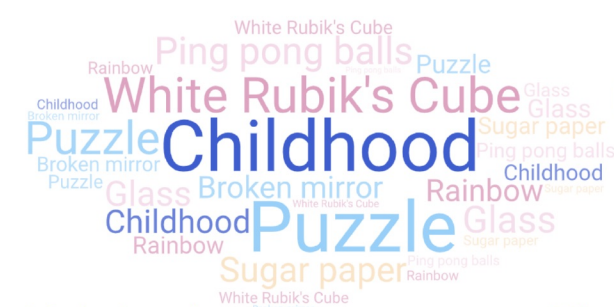
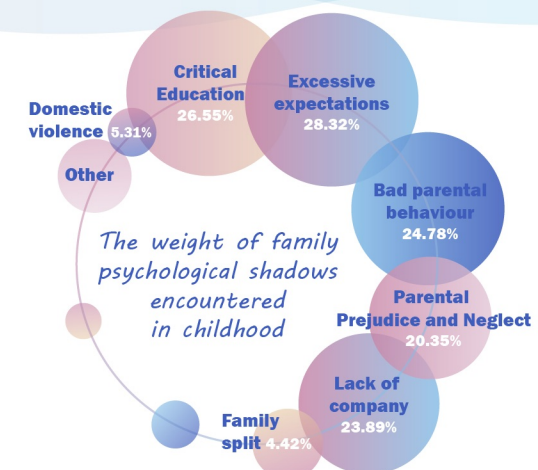
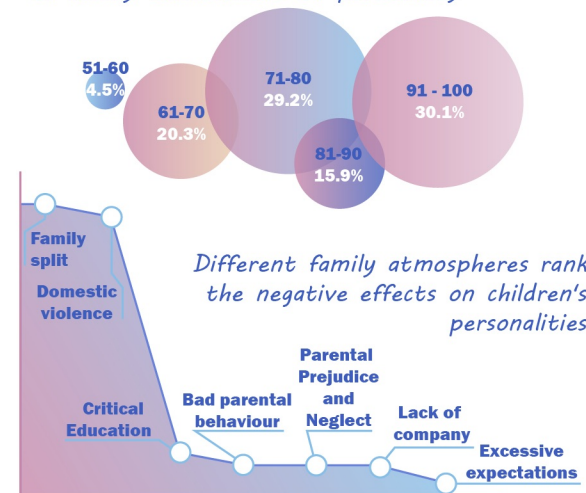
## BRAINSTORMING



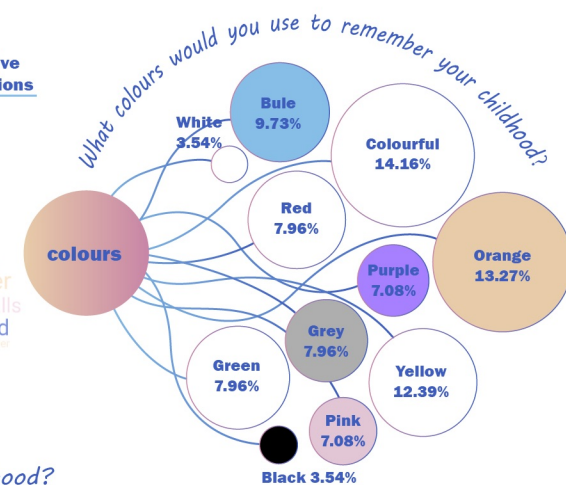
*The fortunate are protected and healed by their childhood throughout their lives;  
the unfortunate go on to heal a wounded childhood throughout their lives.*



Survey on the percentage of influence of family environment on personality



Which object do you think represents your childhood?





INTERVIEW

*"I'm not going to be giving a damn about this family. They don't deserve me."*

HAO

Consequences:  
Cuts off contact with her father, her brother's personality is influenced by his father.

Personality effects:  
Lack of love (separation anxiety), fear of marriage (loss of confidence in men), indifference to affection.

*violence, parents divorced.*

*"I could feel my parents' preference for my brother at a very young age, so I didn't like being with them as a child."*

ZITONG

Consequences:  
Arguments with mother, fights with brother.

Feelings:  
Unfair treatment by mother, father and grandmother who both favour their younger brother.

Personality impact:  
rebellion, lack of communication with parents.

*Family preference for sons.*

*"I hate him, I will never be a man like my father."*

FEIFEI

Consequences:  
never felt a father's love as a child, envied other families, disappointed in what the father did, difficult to understand.

Personality impact:  
Lack of love, sense of lack of family, low self-esteem.

*The father cheated in marriage, parents divorced.*

SKETCHES



IDEA1

The installation uses bubbles to represent childhood memories, with each bubble showing a different memory of growing up in youth, a happy childhood wrapped in love and light, and an unhappy childhood dark and heavy.

IDEA2

The CDs are used to symbolise childhood memories in miniature. The CDs are collaged with different colours and materials to design different childhood memories for each person, allowing people to participate in them and realise the interaction between the installation and people.

IDEA3

Comparing the psychological shadows of childhood families to memories sealed in ice, as time passes through the hourglass, these psychological shadows from the family of origin will gradually melt away, allowing time to heal the damage.

DESIGN IDEA

The use of transparent acrylic to simulate ice symbolises the freezing of memories of a painful childhood family childhood shadow, with each of the different squares having its own meaning within it.

The design is intended to freeze the painful childhood and then allow time to melt the pain away, the memories of frozen pain will eventually fade away in the hourglass of growth.

Use acrylic to represent ice.

Time will melt the painful memories.

EXPERIMENTS



MATERIALS

Acrylic Boxes, Drips, Netting, Wool, Plaster Dust, Cigarette Butts, Feathers, Tinfoil, Ink, Mirror Fragments, Acrylic Rods, Dried Flowers, Doll's Eyes, Broken Test Rolls, Styrofoam, Moss, Wine Bottle Fragments, Hoses, Wool Balls, Teddy Bears, Wool Rods, Glass Beads, Plastic Beads, Dinosaur Toys, Cotton.

INSTALLATION DECONSTRUCTION



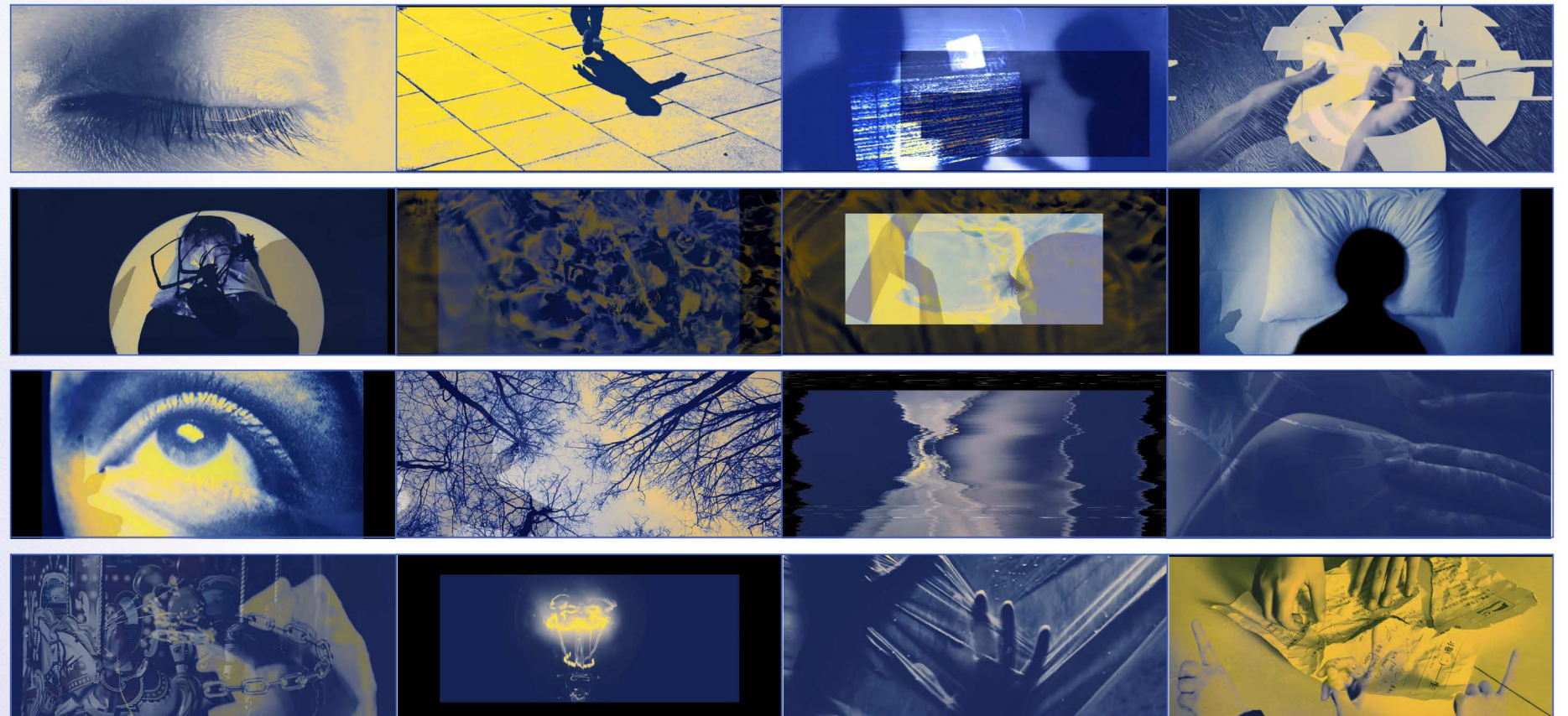


## INSTALLATION ART EXHIBITION



I hope to use art as a way of healing for those who have experienced childhood family problems that have created shadows in their minds. The work takes the form of an hourglass, using acrylic to simulate ice, comparing the psychological shadows of childhood families to memories sealed in ice, which will gradually melt away as time passes, allowing time to heal the damage.

## VIDEO DISPLAY



<https://youtu.be/byQqox8Zpxs>